



Edison Lutheran Church

THE PARISH VISITOR

APRIL 2024

*“Then the Lord answered Job out of the storm.”
(Job 38:1)*



Dear People of God,

Job is a difficult book to understand. It doesn't read like a historical account, nor can it simply be classified as poetry. Perhaps it is best thought of as a play, with a narrative prologue leading into the main body of the book: a poetic debate about inexplicable suffering between Job, his community, and God. Finally, there is a brief epilogue detailing Job's restoration, though it still leaves us with many unresolved questions.

It begins by introducing Job, a man described as righteous in every way. He is honest in all his dealings, well respected by his community, and blessed with abundance in every part of his life. Not only is he careful to avoid sin in his own life, but he even does his best to preserve the righteousness of his family, always offering extra sacrifices for his children just in case they have secretly sinned in their celebrations.

Job's exceptional righteousness even gains him divine attention. One day, when the heavenly beings are standing before God, God turns to Satan¹ (the divine prosecutor) and asks him what he thinks of Job. Satan replies by challenging God's appraisal of Job, arguing that Job is only righteous because God has given him such a prosperous life. God agrees to allow Satan to test Job's faithfulness by afflicting him with tragedy, taking his possessions, killing his children, and scattering his household. When Job remains faithful, Satan tries again, afflicting Job with painful sores all over his body.

Job, for his part, knows nothing of the reason for his misfortune. One day life was good and he was assured of God's blessing. The next day it seemed that God had taken everything away from him without cause. Still, Job will not renounce God even at the urging of his grief-stricken wife. "Is it only the good we accept from God? Do we not accept the bad?" (Job 2:10) When his community hears of Job's suffering, three of his friends come to comfort him, sitting with him in silence for a full week.

Finally, Job breaks the silence with an impassioned lament in which he wishes he had never been born, and the main part of the book begins. Job's friends are apparently shocked by this lament, and they spend the next twenty-two chapters trying to convince Job (unsuccessfully) that he should quietly accept this suffering as punishment for some sin he must have committed. Job, for his part, continues to insist on three seemingly irreconcilable facts. First, he is sure that he has done nothing to deserve this. Second, he is convinced that it is God who is behind this calamity. Third, he will continue to make his appeal to God even though God is silent: "Even if he kills me, I will wait for him. Surely I will argue my ways to his face." (Job 13:15)

¹The Hebrew word satan means "adversary" or "accuser." In the book of Job, it is as much a title as it is a name.

This seems blasphemous to Job's friends, but try as they might, they cannot convince Job of anything else. Finally, after they have worn out all their arguments, a fourth person named Elihu begins to speak, one who has been present for the entirety of this debate. On the one hand, being much younger than any of the other men there, he is hesitant to speak. On the other hand, having witnessed the futility of their arguments, his passion compels him to speak.

Elihu criticizes Job on two fronts. First, he argues that God has not been silent, but in fact speaks constantly in many ways, even through the voices of others. Our inability to properly hear does not mean God is not speaking. Near the end of his speech, Elihu refers to the distant sound of thunder: "Listen carefully to the wildness of his voice!" (Job 37:2) Second, he rejects any claim (from Job or the three friends) that God owes the creation anything. God is not hurt by our wickedness nor helped by our righteousness, and so it is foolish to think we can obligate God through our actions. God's ways in creation exceed our understanding and offend our sense of justice, and yet "we cannot reach the Almighty." (Job 37:23)

We do not get to hear Job's response to Elihu, for suddenly God's voice emerges from the gathering storm. Whether Elihu intended it or not, his speech has been the transition between Job's debate with his friends and Job's direct encounter with God. Suddenly the time for debate and speculation has passed; the time has come for God to speak.

God's response frustrates all expectations. Rather than explaining to Job why all this has happened, God challenges Job to give his own explanation. God confronts Job again and again with the violent wildness and mystery of creation, and defies Job to explain it according to his idea of justice. When Job refuses to answer, God continues to challenge him. Surely if Job is dissatisfied with God's governance, then Job can do better!

Remarkably, Job seems to be satisfied with this answer. "By the hearing of the ear I had heard of you, but now my eyes see you! Therefore I renounce my claim, I find consolation² in dust and ashes." (Job 42:5-6)

Something about this direct encounter with God has eased Job's painful sense of injustice. Though he receives no satisfactory explanation, he is satisfied by being put back in relation with his Creator. God confirms this response by giving a judgment: Job has spoken rightly of God and the three friends have spoken wrongly.

The epilogue to the story tells how Job prays for his three friends and how God forgives them for their foolish words to Job, and then how God restores the fortunes of Job to be twice what he had before, including more sons and daughters. The rest of Job's life appears to be one of happiness and prosperity, though the reader is left wondering how this makes up for the loss of his ten children.

The story of Job leaves us with no easy answers, and it raises difficult questions about the nature of God, creation, and suffering. In this respect it mirrors the complexity of this world in which we live, resisting the sorts of simplistic explanations we crave. While this is frustrating for those of us looking for a logical explanation for why God allows things to be the way they are, it is also part of what makes it so powerful. Here we are confronted with an inscrutable contradiction: our experience of suffering and our faith in the goodness of God.

While Job does not solve this contradiction for us, it does give us some wisdom in moving forward. It reveals that our logical attempts to explain away the contradictions of life will not be enough to deliver us from our suffering. Rather than engaging in *theodicy* (*theo* = "God", *dicy* = "justification") which tries to explain why God allows suffering and injustice, the book of Job points us toward *theophany* (*theo* = "God", *phany* =

²This word is ambiguous, and can mean both "regret" and "be consoled."

“*appearing*”) where God actually shows up to address us in our suffering. To put it another way, when we experience suffering, instead of speculating about what we might have done to deserve this, we take our lament to God in prayer and listen for God’s responses in scripture, sermons, sacraments, and faithful friends. Rather than appeasing ourselves with moral conclusions and logical systems, true healing is to be found in relationship with the God of the promise and with the faithful community who gathers around that promise.

This is easier said than done, and yet it is the only way forward. Our Creator and this creation are bigger, wilder, and more mysterious than we can ever comprehend. And yet, by the mercy of Almighty God, we have in Jesus Christ a peace which surpasses our limited understanding and a promise which outlasts suffering, evil, and even death itself.

Your brother in Christ,
-Pastor John

Pastor’s Bible Study -- Mondays at 7 pm (except April 1st & 22nd)

Join Pastor John for Bible Study via Zoom (zoom.us/join).
Weekly text and Zoom link are posted on the church website.

Bible Experience Class -- Sunday at 9:00 AM

Adults and older youth who are interested in going deeper can **join Pastor John in weekly discussions on Sundays at 9:00 am** in the Fellowship Hall. Each week we will recap what we read the previous week and introducing what to expect in the week to come.

Pick up a bookmark in class for weekly readings, or look in the Sunday announcements. Anytime is a great time to **jump in!** Contact the office for information.

Women’s Bible Study -- Wednesday, April 17th, at 10:00 am
Join us in the Fellowship Hall

We are studying the Psalms.....a study guide is available in the narthex or contact the church office for a copy. Bring a Bible and/or a contemporary translation or paraphrase. ALL are welcome.

OUR CHURCH COUNCIL 2023—2024		<i>*Committee Liaison</i>	
Linda Johnson, President	<i>*Parish Life</i>	Inger Conner	<i>Social Concerns</i>
Patsy Martin, Vice-President	<i>*Stewardship</i>	Steven Dahl	<i>*Finance</i>
Linda Tyler, Secretary	<i>Parish Life</i>	Cheryl Conner	<i>*Social Concerns</i>
Chris Omdal	<i>*Youth</i>	Judy Bendtsen	<i>*Evangelism</i>
Jean Miller	<i>*Worship & Music</i>	AnnaLaurie Wattson-Lamb	<i>Worship & Music</i>
Christie Peterson	<i>*Property & Management</i>	Laura Engebretsen	<i>Property & Management</i>



Please Join Us For Worship
at
Edison Lutheran Church
Every Sunday at 10:30 am

Worship Attendance

	In Person	Online (live and recorded)
March 3:	91	34
March 10:	101	21
March 17:	94	34
March 24:	<u>114</u>	<u>21</u>
Average	100*	28

* March 31st (Easter) will be included next month

Church Financial Update for February

February Giving: \$24,437.41 (Thank you!)

2024 Budget Goal Through February: \$57,073.23

2024 Total Giving: \$52,073.23

(\$5,251 short of goal)

The ministry of Edison Lutheran Church is financially supported entirely by the donations of members and visitors. Your gift furthers this congregation's ministry to those in need, helps foster fellowship, and promotes the spread of the life-giving gospel of Jesus Christ. Donations may be put in the offering plate, sent by mail, or given online by visiting our website or scanning the QR code to the right. We appreciate your generosity!



A BIG thank you to all who made the Easter Brunch a great success!! Especially the Parish Life Committee for the wonderful food. There are so many people who helped. Thank you to Brenda Geary for festive table centerpieces. Thank you to our church youth who helped with clearing tables and dishes. An event like this takes a village, and what a wonderful community we are part of! - **Kris Merritt, Parish Life Committee**

Thank you to everyone who came out for our Spring Cleaning Day! Sadly, Adele didn't make it, but we had **over 30 people cleaning inside and outside**. Thank you for all the dusting, window cleaning, weeding, and organizing. The Church looked amazing for Holy Week! - **Property & Management Committee**

This congregation is amazing! As the funeral coordinator, I asked for help and you delivered. No one turned down the opportunity to serve! Thank you to everyone who made Lyle & Cindy Caplinger's reception so wonderful. These gatherings also speak to the community of the mission we share to welcome, nurture, and serve. It is a pleasure to be part of such a generous congregation! Thank you one and all! - **Kris Merritt**

Edison Lutheran Church Announcements

College Scholarship Applications are due April 15. There are several scholarships available for the **2024-2025 school year**, including the Einer & Ruby Knutzen scholarship we share with Burlington Lutheran. Completed applications must be received by the correct church office (hard copy or electronic) **no later than 11:59 pm April 15, 2024.** Applications are available on our website and in the narthex. Contact the church office for more information.

Camp Lutherwood: Our students are planning to attend camp from July 21-26 if you would like your student to attend with the Edison Lutheran students. **Scholarships Available!** Instead of giving out full camperships to everyone who goes to camp, this year we have around \$4,500 that we will be distributing to families based on need. **We want as many kids to go to camp this year as possible!** To request a campership, send us an email with the name of your child, the price of the camp, and the amount you are requesting (all the way up to 100%). Any money left over at the end of May will be distributed equally among the campers who have shared their camp receipt with us. Email edisonlutheran@live.com.

Young Adult Group: Everyone, high school through college age, are welcome. The group meets every **Tuesday at 6:00 pm** (except April 2) in the Fellowship Hall. Please join us and bring a friend or two for food, fun, and fellowship!

Shredding Event: Help the environment and protect yourself from identity theft! Bring your confidential documents to 130 E. Fairhaven, Burlington (former Thrifty Foods parking lot) on **Saturday, May 18 from 9 am to 12 pm.** Mobile shredding trucks will be on-site to securely destroy your materials. Suggested donations (cash and checks only) is \$5.00 per box or \$100 per truckload. All donations benefit **Soroptimist International of Burlington.**

BBQ & Movie Night: Join us on **Saturday, April 20th at 5:00 pm** for a BBQ dinner and movie night for all ages. Yes, it's another amazing cross-generational opportunity!

Christ in Our Home devotional booklets: We have the April to June *Christ In Our Home* booklets available. They are on the desk in the narthex or contact the church office.

Blood Drive Update: The next Bloodworks blood drive will be **Thursday and Friday April 4th and 5th** from 10 am to 4 pm in the Fellowship Hall. All donations are by appointment only. To make an appointment: call 1-800-398-7888 or go online to schedule.bloodworksnw.org. Contact the church office with questions.

Sunday School: Spring Break for Sunday School will be **Sunday, March 31 and April 7th.** For planning purposes, the last day of Sunday School will be **May 19th.**

Save the Date: The weekend of **July 12th-14th** get ready for a **camp out and outdoor worship at Saxon by the Nooksack River!** The current plan is for Friday, July 12th the Young Adult Group will camp overnight. On Saturday, the rest of the ELC Family can join the Young Adults to camp overnight. On Sunday, we will have worship by the river followed by a BBQ lunch for fellowship.

Newsletter Deadline: Is there something missing from this newsletter? If you have information for the June Newsletter, please send it to the church office no later than **Tuesday, April 23rd.** We are always looking for information from committees, partner ministries, and local events that our members are participating in...**we love to support our congregation members!**

Free Notary Public Service: The Church Office offers free notary services. Call or email the church office to make an appointment.

Church Committee Updates

SCOUT BUILDING DEMOLITION

The Scout Building is gone! Many of you have fond memories of the time you spent there. In a matter of 5 days a crew of hard workers dismantled and removed the building leaving only a cement pad. It was mainly used by Scout Troop #73, but has also been used for an office, youth activities, Sunday School class, storage, and meeting area. The hope was that it could be remodeled and used as a youth center. An inspection and construction bid for remodeling showed it to be questionable and not cost efficient. Time finally took its toll on the structure, and **it became evident it was beyond repair.** The decision was made to take the building down. During the demolition it was clear the building could not be reasonably repaired. They found decaying wood, pieced together studs, and window, roof and insulation problems. Most of the building materials from demolition were recycled or repurposed.

A huge thank-you to **Brad Wyman** who headed up the project. Helping him were **Larry Forsythe, Keith Peterson, Evan Swanson, and Chris Omdal.** We now look forward to what we can do with the courtyard, and the arrival of a new playground this summer.

Our next meeting is **April 2nd at 7:30 pm** in the Fellowship Hall. We would love to see you there!

- Property and Management Committee

The Children, Youth, and Family Committee held a **Game Day last week.** We had a good time and encourage more of you to attend next time. Our goal with this is to first have fun, but also to provide an opportunity for our **older and younger church members to interact.** How often do kids actually talk to adults who aren't family members and vice-versa? This is a chance for the generations to get together and try to take each other down with a hard-fought board game.

The committee also sponsored an **Easter Egg hunt** for the Sunday School kids. We did it on Palm Sunday, since many people will be traveling on Easter. However, 4 of our kids were gone on Palm Sunday, playing in a basketball tournament, but in a sweet gesture the other kids collected baskets for them.

Our next event is a **BBQ and movie night on April 20th at 5:00 pm.** Everyone is welcome to join our church family for hotdogs and a movie. Dinner will be served at 5:00 and the movie will start at 6:00ish. We hope you can join our cross-generational event!

The committee meets monthly. All are welcome. **The next meeting will be 14 April at 12:00.** We will be planning our BBQ and movie night.

- Children, Youth, and Family Committee

Stewardship Committee: We are meeting via **Zoom on April 11th at 5:00 pm.** During the Annual Meeting, the Stewardship Committee was designated as a stand alone committee. In this meeting we will be reviewing our updated bylaws, determining how our committee can assist in achieving the churches goals, and determining a work plan for 2024. If this interests you, Join us for our meeting! Please contact Patsy Martin or the office for the Zoom link. See you on April 11th!

Edison Lutheran Church Volunteer Opportunities

Josephine's Caring Community: JCC needs the following items: reading glasses (2.5 magnification or greater); washable wool yarn; new hand towels; travel sized toiletries; and birdseed. Please place items in the box in the Narthex. We also have this shopping list by the box to take with you on your next shopping trip.

Volunteers Needed: The greatest gift you can give is the gift of yourself. Do you have a few extra hours you would like to spend helping someone in your neighborhood? **Hospice of the Northwest** seeks compassionate, community-minded individuals to provide support and companionship to the dying and those who love them. Go to www.hospicenw.org/volunteers for more information.

Children, Youth, and Family Committee: Now that we have so many children, youth and family activities, we have started the committee again! **Our committee plans events for all ages.** If you want to be a part of this fun committee, please join us on **Sunday, April 14th** after worship for an event planning meeting or contact the church office with questions. We hope to see you there!

We need at least 30 dozen cookies on the last Monday of every month for our Friendship House dinners. Home baked or store bought cookies. Please let us know how many cookies you made by signing the sheet on the bulletin board in the Fellowship Hall. We would also appreciate it if you marked your container with how many cookies are in each container. Bring the cookies in clearly marked freezer containers and leave them in the freezer in the small room to the left as you enter the Sunday School building. Your empty containers will be left on the small table in the Fellowship Hall by the coat rack, for you to pick up and use again. Thank you for all the cookies!

Care Team: We have a number of Edison Lutheran members who are living alone or in care centers. We also have young adults living away from home. **They would all really appreciate a card from you or your children.** Please send them a card. Everyone likes getting mail and knowing that others are thinking of them. Something in their mail can really brighten their day. Contact the church office for names and addresses.

Flowers for the Altar: We welcome beautiful flowers for the altar. Spring is here! Share your amazing flowers with us. The flower chart signup is in the Fellowship Hall or let the church office know if you can provide flowers for the altar.

Youth Group: Everyone high school through college age youth are welcome. The group will meet **Tuesday 6:00 pm-8:00 pm** in the Fellowship Hall. **We are looking for a few adults to help** with food and attend meetings.

Don't Forget the Grocery Cart: Edison Lutheran accepts food, cleaning products, and self-care items for Helping Hands. Just place items in the grocery cart in the Narthex and, after we stock our Sharing Shelf, we deliver items to Helping Hands. Our grocery cart is a great way to get food directly to those who need it.

Did You Know? The church has money available to pay for food to prepare meals for Family Promise and Friendship House. If you would like to make dinner for these partner ministries, but would like to be reimbursed for the food, contact the church office. We don't want paying for food to stop anyone from volunteering!

Social Concerns Ministry: Jesus taught us to help those in need. That is exactly what the Social Concerns Ministry Committee does. We need help providing support to our Partner Ministries: Friendship House and Family Promise. These great organizations **bring help directly to those who need it most.** We have volunteer opportunities for all comfort levels, from behind the scenes to working directly with those we serve. Please join us, **Monday, April 1st at 6:30 pm in the Fellowship Hall** for our monthly meeting.

Edison Lutheran Church Ministry Partners

Our church has partnered with many non-profit organizations. Since not everyone knows who we are partnered with or what they do, here is a quick page to explain our partner ministries. Edison Lutheran Church is both doing great things in our community and helping others to do great things!

- ◆ **Family Promise:** Their mission is to come together as a community to support homeless families as they work to provide their children with loving homes. Family Promise partners with local churches to provide shelter and food for families. The family gets to stay together, unlike homeless shelters where men and women are housed in different rooms. They also provide training and assistance to help them find work and a home. Edison Lutheran prepares/serves dinner and serves as overnight host for **3-4 evenings quarterly**.
- ◆ **Friendship House:** The mission of Friendship House is to reflect the heart of God by feeding, sheltering, clothing and healing...to empower those in need. They serve almost 100 meals daily mostly at the Friendship House Café. They also have two clean and sober emergency shelters, one low barrier shelter, one transitional house, one permanent low income shared living house, plus First Step, the tiny house village in Burlington. Edison Lutheran prepares and serves dinner on the **last Monday of every month**.
- ◆ **Helping Hands Food Bank:** Has multiple programs to address food insecurity, including: C.H.O.W that provides 2,500 kids weekly with backpacks filled with food to get them through the weekend; Grocery Rescue that collects food from grocery stores that would have been thrown out and gets that food to people who need it; Food Bank, mobile food bank, and small 24/7 food shelves located around the community, to provide food without questions or judgment directly to those who need it.
- ◆ **Dancraig School in Tanzania:** The school provides a quality education to those who cannot afford one. They also provide room and board to those who can't afford it. In Tanzania, education is often only for the wealthy. The Dancraig school ensures opportunities for students who otherwise would have none.
- ◆ **El Camino de Emmaus:** Provides adult and youth Lutheran pastoral services to our local Spanish speaking community. They are currently holding worship Services at Burlington Lutheran Church every Sunday at 12:00pm.
- ◆ **Josephine Caring Community:** Provides transitional rehabilitation, assisted living, long-term care, and early learning and childcare. They provide healthcare, spiritual care, and emotional support for all residents. Edison Lutheran always ensures the residents receive Christmas gifts every year.
- ◆ **Camp Lutherwood:** Provides summer programs for youth for fun and to help them in their faith journey. Camp Lutherwood also serves as a meeting place for church groups and lay organizations. In addition to monetary benevolence, our church provides scholarships to attend summer camp.
- ◆ **Lutheran Campus Ministry at WWU, UW, and PLU:** Campus Ministries provide spiritual support, guidance, gatherings, and worship opportunities for college students.
- ◆ **Lutheran World Relief:** Founded by Lutherans in the United States at the end of World War II, grounded in Lutheran theology and building on decades of experience, Lutheran World Relief tackles global poverty by helping people adapt to the challenges that threaten their livelihoods and well-being. Our church donates money, and has donated self-care kits and school kits in the past.
- ◆ **Wycliff Bible Translators:** No one should have to learn another language to understand God's Word. And yet millions of people are still waiting for a single word of the Bible's life-transforming power. Their goal is to translate the Bible into every language ... until all the nations worship!

Updates From Our Ministry Partners

Dancraig School, Tanzania

Update from Naomi Wankuru, Director of the Dancraig School:

We are currently busy with end of month examinations. We are closing the school for the Easter Holiday. We shall close for two weeks and resume back to school. We shall remain with class four and class seven pupils who are sitting for their national exams this year. We pray for their success. Otherwise all is fine. We are busy working hard to cover the remaining syllabus and start revision as soon as possible. We thank God daily for our wonderful partnership! Naomi Wankuru

Helping Hands Food Bank

Don't Forget the Grocery Cart: Edison Lutheran accepts food, cleaning products, and self-care items for Helping Hands. Just place items in the grocery cart in the Narthex and, after we stock our Sharing Shelf, we deliver items to Helping Hands. Our grocery cart is a great way to get food directly to those who need it.

Neighbors Night in the Tulips: Helping Hands invites you to join us on **Wednesday, April 17th, from 4:30 pm to 7:30 pm at Tulip Valley Farms** (15245 Bradshaw Rd, Mount Vernon) for Neighbors Night. This fun and FREE community event opens up the tulip fields to the locals and gives us a chance to connect, care, and create as neighbors! Participate in our scavenger hunt for an opportunity to earn prizes while learning more about what Helping Hands does, how rural hunger looks different from urban hunger, and how you can get involved as a participant, donor, volunteer, and/or supporter! A light dinner will be provided thanks to our wonderful sponsors.

Friendship House

Friendship House Dinners: We prepare and serve the hot food that is so appreciated the **last Monday of every month**. Contact the church office if you would like to help shop for food, prepare food, or serve food.

Friendship House Cafe Donations: Friendship House will accept **food donations** between the hours of 3 and 6 pm. Items such as 5-10 lb packages of hamburger or chicken, large cans of chili, baked beans, or vegetables, bags of potatoes, and sandwich/sack lunch ingredients are some of the foods to consider donating. To check on the most current needs you may call (360) 336-6138 and select option 4 to leave a message for the Cafe manager, Tom. He is reliable in calling back. The address of the Cafe is 108 Snoqualmie Street in Mount Vernon.

Josephine Caring Community

In April of 2023 Lutheran Social Services for the Elderly awarded a **3 year grant to JCC** for residents to create kits and donate goods to local shelters. The primary purpose of the grant is to **instill a sense of purpose and meaning for residents through their active contribution to the community**. Secondly the grant enhances the lives of those who receive the donations. The residents put together toiletry kits, birthday kits (for children/youth), make hats and scarves, and make leashes (for NOAH) and donate these goods to local shelters. You can support this "Hands of Hope" project by **sewing the toiletry kits for residents to fill** using a provided template and provided hand towels. **You can knit**. You can **be present with residents** in this project as an assistant to support and encourage these elders. Contact the church office for more information.

Updates From Our Ministry Partners, Cont.

Camp Lutherwood



BINGO for Lutherwood: There is a BINGO fundraiser for Camp Lutherwood! Sunday, April 14th at Viking Hall in Silvana, WA. Come out for an evening of fun, games, and comradery! Doors open at 5:00 with a spaghetti dinner (cost TBD). The games start at 6:00pm. The cost for games is \$10 for 15 games and \$1 for 3 blackout games. Please contact Janice Stepp for more information, 425-210-2733 or wmpjms@gmail.com.

Summer Registration is Open! Our students are planning to attend camp from **July 21-26** if you would like your student to attend with the Edison Lutheran students. **Scholarships Available!** Instead of giving out full camperships to everyone who goes to camp, this year we have around \$4,500 that we will be distributing to families based on need. **We want as many kids to go to camp this year as possible!** To request a campership, send us an email with the name of your child, the price of the camp, and the amount you are requesting (all the way up to 100%). Any money left over at the end of May will be distributed equally among the campers who have shared their camp receipt with us. Email edisonlutheran@live.com.

Summer Jobs: Camp Lutherwood is hiring! They need youth counselors, leadership team, support staff, and a Camp Medic. Contact Camp Lutherwood with questions, www.camplutherwood.org.

Family Promise

Family Promise February Report: Family Promise served **48 families across all programming** in February: 4 families found permanent housing; 5 families moved up to transitional housing; and 4 families were moved into our emergency shelter. **Thank Edison Lutheran** for your help in making the Family Promise mission such a great success!

Family Promise Volunteer Opportunity: We will be hosting the Family Promise guests at Bethlehem Lutheran from **Thursday, June 13 through Sunday morning, June 16th**. Volunteers are needed to stay overnight on very comfortable cots, provide meals, and serve meals. If you can provide any part of a meal for up to 14 guests your help is welcome even if you cannot stay to serve dinner. Your donations of **grab and go individually packaged snacks and breakfast food** would be appreciated for these days. Please leave nonperishable items such as breakfast bars, granola bars, power bars, nuts, dried fruit, juice boxes, and single serving boxes of cereal in the Family Promise tub in the narthex.

Save the date for our Annual Tea at the Manor: Family Promise is holding their special program of Tea at the Manor on **May 18th from 1:00—3:00 pm at Willowbrook Manor**. This is another great opportunity for corporate or non-profit involvement. Can't attend? Don't worry. As we get closer to the event there will be opportunities to have your donation matched. Check the website for more information or contact our church office. We will have more details as we get closer to the event.

Family Promise: Did you know you can help Family Promise earn donations by just using your Fred Meyer Reward Card? Just sign up at www.fredmeyer.com/communityrewards to link your Reward card to Fred Meyer's Community Reward program. Select Family Promise of Skagit Valley as your recipient of these funds. Every time you shop and use your reward card you are helping Family Promise while still earning your rewards, rebates, and fuel points. Remember small donations make a big difference!

Gift Cards Needed: Family Promise needs gift cards for Walmart and Fred Meyer to give to their guests who need clothing, gas, and other essentials. Feel free to send gift cards directly to Family Promise or give them to the greeters at church. We will get them to Family Promise.

From the April 2024 Edition of *The Spirit*



From the Bishop:

In fifth grade, I started playing trumpet. This wasn't the instrument that I chose – it was chosen for me because my aunt had an old trumpet and my mom said, "If you want to be in band, you can use this trumpet." But even though I wanted to play the flute, the trumpet was definitely the instrument for me. I loved playing trumpet. I loved the sound, the way to make different notes with just three valves, using different mutes that produced complexity of tone. I loved to polish and clean my trumpet – especially when I received a new silver trumpet in high school. The only thing I didn't like was carrying it to and from school because of the big hill that we lived on.

In high school I was in both band and jazz band. In jazz band we traveled to many competitions – winning the Reno Jazz Festival one year. When I look back on my experience in band, I realize that there are so many things that I continue to apply in my life, and as part of the body of Christ, that go back to being in band.

First, you can't be a band on your own. If you play a solo instrument, that is lovely. But that isn't a band. There needs to be a group to form a band – it can be small or large – but an agreement that you are engaging with one another and playing music with one another leads to forming a band. If you are using music, the same music is important – also the same key and the same beats per measure helps. An agreement on how fast or slow the tempo is important. In short, community is needed for a band.

Second, you can't all play the same instrument. I mean, I love the trumpet – but a band of trumpets is one-dimensional (and can be very loud). I admit that as much as I love brass, you need more than brass to form a band. We have all heard brass quartets – but for a band, you need the saxophone, the piccolo, the clarinet, the drum, and so much more. Diversity is needed in a band.

Third, you can't drown out others. I speak as one who plays trumpet. Trumpets know how to be loud. And if trumpeters are not careful, they will hide the beauty of the other instruments. There is nothing more gorgeous than notes from an oboe coming from seemingly nowhere to fill the air with that wistful, haunting sound. In other words, listen for the woodwinds. A variety of sounds and voices are needed in a band – especially those that are more hidden.

Fourth, harmony doesn't mean the same note. It would be boring if every single instrument played the very same note for every song in a band's repertoire. Our ears are tuned to hear melody, harmony, dissonance, and resolution. In a band, it is imperative that different notes are played – different rhythm patterns are introduced, and a play amongst the instruments happens. Harmony and dissonance are needed in a band.

Dear people of God, these four things are also needed in the church and in the world: Community, diversity, variety of sound and voice, harmony and dissonance. I invite you to think about your worshiping community. How are we all like a band? How can we be more intentional in these four areas?

Our composer and maestro is God – God is directing and leading us – in the music we co-create. May this spring awaken you in the beauty and grace of God. May the community in which you gather bring music in all its fullness.

+ Bishop Shelley Bryan Wee / bishop@lutheransnw.org

Northwest Washington Synod/ELCA Events

Request from the Synod Hunger Team: If your congregation/ministry site has current projects - or ideas for future projects - the Synod Hunger Team would appreciate hearing about them so we can share with other churches in our synod! Please email Co-chair, Bob Wall at: bobcwall@gmail.com

Abide in the Word Bible Study - continues! Please join us **Tuesdays, 7-8pm via Zoom**. This is a year-long, Synod-wide weekly Bible Study that takes participants on a deeper dive into the coming Sunday's Lectionary text. Participants will have the chance to experience diverse perspectives and voices from various guest facilitators from across the synod. This is a FREE LIVE offering! No registration needed! YES, you may join in any week. Contact the ELC office for the link.

Save the Date: The **Northwest Washington Synod Assembly** is on **Saturday, May 18, 2024** at Grace Lutheran Church in Des Moines, WA. This one-day (9am-4pm) assembly will include worship, reports from our synod leaders, elections, resolutions, ministry anniversary celebrations, and maybe a few fun surprises! Our theme, *We Lift Our Eyes*, is based on Psalm 121:1-2: *I lift up my eyes to the hills - from where does my help come? My help comes from the Lord, who made heaven and earth. We give thanks for the opportunity to spend time with you in May - lifting our eyes to see God, to see each other, and to see where God is leading us.*

New HYBRID Adult Learning Series coming this Spring for Six Sundays at 11 am - beginning April 7 - from Our Savior's Lutheran, Everett. Our Saviors is piloting a new ELCA course led by Rev. Dr. Rick Rouse designed to explore Christian discipleship in the public arena. Looking toward the 2024 election, we will seek to answer the following questions:

How do we faithfully live out our baptismal vocation in everyday life?

What does it mean to follow Jesus in our citizenship?

Why could voting be considered a faith-filled act of justice?

The course will be offered hybrid for six weeks beginning Sunday, April 7th. If interested in joining us online contact Marko Jokinen at aerofinn@aol.com

Are You Smarter Than a Confirmation Student? Below is a question that our Confirmation Students can answer. Can you?

What event takes place 40 days after the Resurrection?

See page 15 for the answer.

Prayer Requests



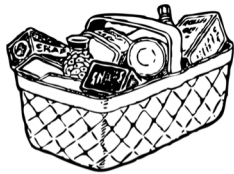
Remember in your Prayers: Remember in your Prayers: We pray for the family of **Janet Navert**, the family of **Jim Jensen** (brother of Vic Jensen) and the family of **Paul Engebretsen** (Brother of Laura Engebretsen), we also pray for **Chris Whelehan** (friend of Kris Merritt), **Marna Carpenter** (niece of Julie Rousseau), **Al Fredrickson**, **Sharon Schroeder** (sister of Larry Olsen), **Ryan Dahl** (brother of Steven Dahl), **Carla Hunter** (aunt of Gregory Ormsby), **Brandon Benson** (friend of Debbie Reigel-Yates), **Jeannie Omdal**, **Marian Hiett** (Janet Wyman’s mother), **John Probstfield**, **Lyn Scherer** (sister-in-law of Cathy Smith), **Kerri Fredrickson** (daughter-in-law of Barb & Al Fredrickson), **Bailey Claybo** (Marlys Johnson’s great niece), **Merlin Cavender** (Father-in-law of Pastor Lori), **Debbie Chavarria** (friend of Cathy Smith), **Jerry Butterfield**, **Shirley Lee**, **Jeanne Youngquist**, **Ken Nelson** (brother of Barb Fredrickson), **Gary Englund** (father of Alex), **Jim Forbes** (Debbie Conijn’s step-father), **Edith Nichols**, **Barry Christensen**, **Chris Isaacson**, **Taylor Velasquez**, the ministry of El Camino de Emaús Congregation, and the DanCraig English Medium School in Tanzania.

The Homebound: **Pat Dahlstedt**, **Ron Schutte**, and **Ruth Sexton**.

Those in the Military: **Dustin and Rocio King**.

Please keep the church office current on your loved ones who are (or need to be) named on our prayer list. Office: 360-766-6920 Email: edisonlutheran@live.com

Edison Lutheran Sharing Shelf: Our Sharing Shelf has been getting used lately. Please keep your donations coming. Please place nonperishable food, self-care items, and cleaning supplies in the shopping cart in the Narthex. Extra items will go to Helping Hands Food Bank. The Edison Lutheran Sharing Shelf is open to all. Please let your friends and neighbors know the shelf is open and needs to be used. With the Sharing Shelf, no one needs to ask for help. It’s always open and unmonitored. No one will know if you or anyone you know takes food.



Do You Want To Get Involved With Our Church, But Don’t Know How?

This section is for you! Here are a few ideas of how to get involved, meet new people, and help our church and community. **Don’t forget to fill out the Time & Talents Survey.** Pick up a survey on the desk in the Narthex.

- **Volunteer to help with worship. Just try it! It’s fun and a great way to meet people.**
- Join a committee. Ask any council member or the church office for advice on a perfect fit!
- Make dinner, serve dinner, or stay overnight at Family Promise.
- Make cookies for Family Promise or Friendship House or both.
- Send notes to our shut-in members. They love to get something in the mail!
- Sign up and bring flowers for worship for after Easter.
- **Attend Bible Study or Bible Experience Class.**
- Serve a meal at Friendship House. Thrivent grants or ELC pays for the food.
- Volunteer to help with Sunday School or help plan a youth event.
- **Help with the livestream, Facebook, or other social media.** Or write a newsletter...

These are just a few ideas. Contact the church office for more information or ideas, 360-766-6920 or edisonlutheran@live.com. Also, if we are not using your Time & Talents correctly, contact the church office.

Serving in Worship - April

	April 7	April 14	April 21	April 28
Assisting Minister	Nancy Nygren	Mark Johnson	Chris Omdal	Bonnie Bowers
Acolyte	Blake Caldwell	Jon Benson	Eva Kllogjeri	Kaycee Stubben
Lector	Linda Johnson	Karyn Kerley	Karma Larson	Patsy Martin
Usher	Tom Wake Stephanie Knutzen	Keith Peterson Susan Aarstad	Mark Johnson Judy Bendtsen	Jason Tyler Linda Johnson
Greeter	Steven Omdal Linda Johnson	Shirley Brick Sarah Dahl	Laura Engebretsen Karen Fisher	Jane Fraser Linda Larson
Altar Guild	Susie Forsythe Kathy Shoop	Kathy Shoop RuthAnne Pocock	RuthAnne Pocock Debbie Conijn	Susie Forsythe Janet Wyman
Fellowship Host	Inger & Scott Conner Laurel Black	Lynn & Doug DenAdel Cheryl Conner	Stephanie & Jeff K. Linda & Mark J.	Anne & Bob Kuntz RuthAnne Pocock
CMD	Judy Bendtsen	Laura Engebretsen	Linda Tyler	Linda Johnson

April Birthdays

4/5	Kristen Stubben
4/6	Kaitlyn Brieske
4/6	Karen Fisher
4/6	Keith Peterson
4/7	Ryan Schutte
4/8	Julie Schutte
4/9	Susan Berentson
4/12	Jeff Knutzen
4/12	Dan Martin
4/16	Mark Johnson



4/16	Zachary Larson
4/17	Tim Larson
4/18	Jerry Sells
4/20	Jon Benson
4/23	Irene Fadden
4/23	Cathi Troha
4/23	Tyler Wasilewski
4/26	Blake Caldwell
4/27	Bill Black
4/29	Brenda Harter
4/30	Iris Galbraith

Did we miss your birthday? Please let the office know. We love to celebrate birthdays and would hate to miss yours!

April 2024

Sun	Mon	Tue	Wed	Thu	Fri	Sat
31 <i>Easter</i> 9:15 –10:15 a Brunch 10:30 a Worship	1 <i>No Bible Study</i> 6:30 p Social Concerns	2 <i>No Young Adult Group</i> 7:30 p P&M	3 10:00 a Altar Guild	4 12:00 p Care Team Lunch <i>Blood Drive</i>	5 <i>Blood Drive</i>	6 <i>Omdal Family Fellowship Hall</i>
7 <i>Easter 2</i> <i>No Sunday School</i> 9:00 a Bible Class 10:30 a Worship	8 7:00 p Bible Study*	9 6:00 p Church Council 6:00 p Young Adult Group	10 6:30 Choir	11 10:30 a Care Team Meeting 5:00 p Stewardship Zoom 4:30 Spaghetti dinner @ Allen	12	13 2:30 Memorial for Janet Navert
14 <i>Easter 3</i> 9:00 a Sunday School 9:00 a Bible Class 10:30 a Worship 12:00 p CYF Meeting 12:30 p Confirmation	15 7:00 p Bible Study*	16 6:00 p Young Adult Group	17 10:00 a Women's Bible Study 6:30 Choir	18 10:00 a Prayer Shawl Ministry	19	20 5:00 pm BBQ & Movie Night
21 <i>Easter 4</i> 9:00 a Sunday School 9:00 a Bible Class 10:30 a Worship	22 <i>No Bible Study</i>	23 6:00 p Young Adult Group <i>Newsletter deadline</i>	24 6:30 Choir	25	26	27
28 <i>Easter 5</i> 9:00 a Bible Class 9:00 a Sunday School 10:30 a Worship 12:30 p Confirmation	29 6:00 p Friendship House Meal 7:00 p Bible Study*	30 6:00 p Young Adult Group	1 10:00 a Altar Guild 6:30 p Choir	2 12:00 p Care Team Lunch 5:15 p W&M	3	4

*** Pastor's Bible Study is via Zoom (all other meetings are in-person)**

Smarter Than A Confirmation Student from page 12:

The Ascension: ⁹ Now when He had spoken these things, while they watched, He was taken up, and a cloud received Him out of their sight. ¹⁰ And while they looked steadfastly toward heaven as He went up, behold, two men stood by them in white apparel, ¹¹ who also said, "Men of Galilee, why do you stand gazing up into heaven? This same Jesus, who was taken up from you into heaven, will so come in like manner as you saw Him go into heaven." -Acts 1:9-11

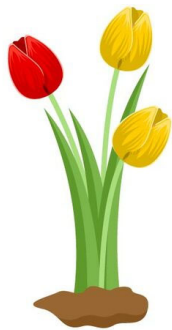
Upcoming Events

- ◆ Last Day of Sunday School, May 19th
- ◆ Next Family Promise Dates for ELC are June 13th-16th
- ◆ Campout & Worship at Saxon by the Nooksak River, July 12th -14th



Monthly Newsletter of
Edison Lutheran Church
14201 Church Road
Bow, WA 98232

Non-Profit Organization
U.S. POSTAGE PAID
Permit No. 3
Bow, WA



April 2024

EDISON LUTHERAN CHURCH

Welcoming...Nurturing...Serving

Worship 10:30 am Sundays

Sunday School 9:00 am Sundays

Bible Experience Class 9:00 am Sundays

Livestream and Recorded online

at

www.edisonlutheranchurch.org

Please join us!

All Are Welcome

Church Office:
phone: 360-766-6920
email: edisonlutheran@live.com
website: www.edisonlutheranchurch.org

Pastor John Guthridge
360-218-4131
pastor.guthridge@outlook.com